



# INFECTION CONTROL & STERILE PROCESSING PORTFOLIO

Established in 1997. Proudly Canadian.   
**Sold in over 85 countries worldwide.**



**NEW!**  
**BATRIK**

# TAG-IT™ | NOTES

## WHEN SIMPLY BROKEN DOESN'T CUT IT—TAG IT, TELL IT, OWN IT!

Tag-It™ Notes offer the freedom to **identify and document instructions** for instruments, trays, and carts before and after **sterilization**. Tag-It™ Notes are **tear-resistant, withstand extreme chemicals, high temperature** and ensures **reliable communication**.

### WHY YOU'LL LOVE THEM:

- Tag-It™ Notes gives you the **freedom** to clearly document important information **without the clutter**.
- Robust and easy-to-use **tie wraps** designed to **securely attach** to instruments (134°C & chemical tested).
- Includes a **fast-drying, heat-resistant permanent marker** for writing your important notes.
- Choose from other **customizable cards** for personalized needs or **pre-made cards** for fast, convenient use.
- When you need more than a "repair" or "sharpen" seal to identify an issue. Instead, **Tag it, Tell it, Own it.**

**WATERPROOF**  
The synthetic paper withstands spills and liquid exposure without any damage.

**ECO-FRIENDLY**  
Made from sustainable materials.

**HEAT RESISTANT**  
Can resist high temperatures of up to 273.2°F (134°C). Compatible with Gas Plasma Sterilization (STERAD®100 NX Sterilization).

**DURABLE & TEAR-PROOF**  
Handles rigorous cleaning, tough conditions, and resists tearing.

### PRODUCT SELECTION

ITEM #	COLOR	SIZE	PACKAGING	
TI-NOTE-R0	Yellow	NOTES	3" x 5" / 8 cm x 13cm	100 / PKG

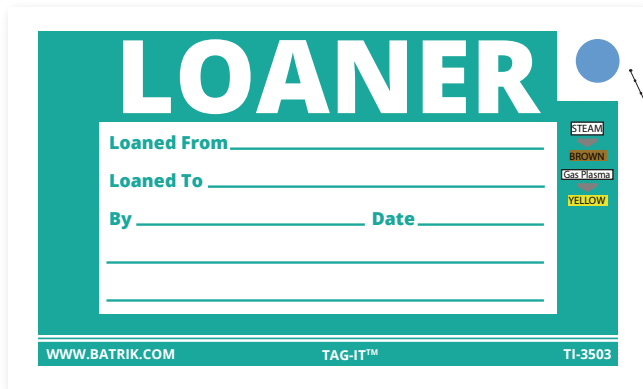
All Tag-It™ are single-use. PACKAGING: 1 pack of 100 tags, 1 permanent marker, and 100 ties.

TAG-IT™

Tag-It™ Cards are an effortless way to add information with either pre-printed or blank formats. These **durable** tags streamline your workflow, **withstand tough conditions**, and feature **(optional) indicator dots** for quick verification. They help keep **instruments, trays, and carts** organized, ensuring efficiency before and after sterilization/decontamination.

KEY PRODUCT FEATURES:

- **Special Permanent Marker:** The ink will not run or appear blurry after exposure to chemicals or high temperature (max. 260°C/500°F) sterilization. *(Regular pens or markers can be used only if the tags are not going to be exposed to any sterilization/decontamination).*
- **Tie Wraps:** Assist in securing the tags to almost any instrument or container. *(Tie wraps have been tested for chemical and steam sterilization).*
- **Our Tag-It™:** Will not shrink, absorb water/chemicals, or lose its intended integrity after chemical or steam sterilization.



**(Optional)  
All Tags Available  
with Indicator Dots**  
Provides visual confirmation that  
the tag was processed.

CLICK BELOW TO  
WATCH OUR VIDEO



PRODUCT SELECTION:

ITEM #	COLOR	DESCRIPTION	SIZE	PACKAGING
TI-3502	Blue	VENDOR	3" x 5" / 8 cm x 13cm	100 / PKG
TI-3503	Green	LOANER	3" x 5" / 8 cm x 13cm	100 / PKG
TI-3504	Red	PRIORITY	3" x 5" / 8 cm x 13cm	100 / PKG
TI-3505	Yellow	RE-RUN	3" x 5" / 8 cm x 13cm	100 / PKG
TI-3506	Pink	MISSING	3" x 5" / 8 cm x 13cm	100 / PKG
TI-3507	Orange	BROKEN	3" x 5" / 8 cm x 13cm	100 / PKG
TI-3509	Black	BLANK	3" x 5" / 8 cm x 13cm	100 / PKG
TI-35B1	White	BLANK	3" x 5" / 8 cm x 13cm	100 / PKG
TI-35B4	Red	BROKEN	3" x 5" / 8 cm x 13cm	100 / PKG
TI-35C22	Light Blue	VENDOR CHECK IN + OUT	3" x 5" / 8 cm x 13cm	100 / PKG
TI-35L3	Green	LOANER CHECK IN + OUT	3" x 5" / 8 cm x 13cm	100 / PKG
TI-35T2	Blue	QUICK TURNOVER	3" x 5" / 8 cm x 13cm	100 / PKG
TI-PM09	Black	FINE PERMANENT MARKERS	1.5" Ø x 5.5" / 3.81cm Ø x 12.7 cm	36 / Bag

PACKAGING: 1 pack of 100 tags, 100 tie wraps, and 1 permanent marker.

OPTIONAL | PROCESSING INDICATOR DOTS: Add suffix "ST" to end of code for steam dots, "PS" for plasma dots.

Available in other languages or customize your own.

PRODUCT SELECTION: (customization also available)

VENDOR / BLUE

**ITEM #** **SIZE**  
**TI-3502** 3" x 5"  
 (8 cm x 13cm)

**VENDOR**  
 Company Name \_\_\_\_\_  
 Tray Name \_\_\_\_\_  
 Date of Surgery \_\_\_\_\_  
 WWW.BATRIK.COM TAG-IT™ TI-3502

NOTES / YELLOW

**ITEM #** **SIZE**  
**TI-NOTE-R0** 3" x 5"  
 (8 cm x 13cm)

Tag-IT™  
 WWW.BATRIK.COM TAG-IT™ TI-NOTE-R0

LOANER / GREEN

**ITEM #** **SIZE**  
**TI-3503** 3" x 5"  
 (8 cm x 13cm)

**LOANER**  
 Loaned From \_\_\_\_\_  
 Loaned To \_\_\_\_\_  
 By \_\_\_\_\_ Date \_\_\_\_\_  
 WWW.BATRIK.COM TAG-IT™ TI-3503

BLANK / WHITE

**ITEM #** **SIZE**  
**TI-35B1** 3" x 5"  
 (8 cm x 13cm)

WWW.BATRIK.COM TAG-IT™ TI-35B1

PRIORITY / RED

**ITEM #** **SIZE**  
**TI-3504** 3" x 5"  
 (8 cm x 13cm)

**PRIORITY**  
 Room # \_\_\_\_\_  
 Time Needed \_\_\_\_\_  
 Initials \_\_\_\_\_  
 WWW.BATRIK.COM TAG-IT™ TI-3504

BROKEN / RED

**ITEM #** **SIZE**  
**TI-35B4** 3" x 5"  
 (8 cm x 13cm)

**BROKEN DO NOT USE**  
 DATE: \_\_\_\_\_ PHONE: \_\_\_\_\_  
 DEPARTMENT/CONTACT: \_\_\_\_\_  
 ITEM: \_\_\_\_\_  
 CRITICAL: (☠) Yes No  
 INSTRUMENT SET: \_\_\_\_\_  
 ASSEMBLED BY: \_\_\_\_\_  
 TI-35B4

RE-RUN / YELLOW

**ITEM #** **SIZE**  
**TI-3505** 3" x 5"  
 (8 cm x 13cm)

**RE-RUN**  
 Room # \_\_\_\_\_  
 WWW.BATRIK.COM TAG-IT™ TI-3505

VENDOR IN + OUT / LIGHT BLUE

**ITEM #**  
**TI-35C22**  
**SIZE**  
 5" x 3"  
 (13 cm x 8 cm)

**VENDOR Check In**  
 Tray Received From: \_\_\_\_\_  
 Tray Name: \_\_\_\_\_  
 Received By: \_\_\_\_\_  
 Date: \_\_\_\_\_ Surgery Date: \_\_\_\_\_  
 CPD Notified Prior to Receipt of Trays  
 Received >24 Hours Before Case  
 Inventory List Available  
 Inventory Check Complete  
 All Instruments in Good Condition  
 All Trays Labeled (Patient & Surgeon)  
 All Trays <25 pounds  
 Written Instructions For Use Available  
 Disassembled/Decontaminated  
 WWW.BATRIK.COM TAG-IT™ TI-35C22

**VENDOR Check Out**  
 Disassembled/Decontaminated  
 Inventory Check Complete  
 All Items Complete and Accounted For  
 Returned By: \_\_\_\_\_  
 Received By: \_\_\_\_\_  
 Date: \_\_\_\_\_  
 Notes: \_\_\_\_\_  
 WWW.BATRIK.COM TAG-IT™ TI-35C22

MISSING / PINK

**ITEM #** **SIZE**  
**TI-3506** 3" x 5"  
 (8 cm x 13cm)

**MISSING**  
 WWW.BATRIK.COM TAG-IT™ TI-3506

LOANER IN + OUT / GREEN

**ITEM #**  
**TI-35L3**  
**SIZE**  
 5" x 3"  
 (13 cm x 8 cm)

**LOANER Check In**  
 Tray Received From: \_\_\_\_\_  
 Tray Name: \_\_\_\_\_  
 Received By: \_\_\_\_\_  
 Date: \_\_\_\_\_ Surgery Date: \_\_\_\_\_  
 CPD Notified Prior to Receipt of Trays  
 Received >24 Hours Before Case  
 Inventory List Available  
 Inventory Check Complete  
 All Instruments in Good Condition  
 All Trays Labeled (Patient & Surgeon)  
 All Trays <25 pounds  
 Written Instructions For Use Available  
 Disassembled/Decontaminated  
 WWW.BATRIK.COM TAG-IT™ TI-35L3

**LOANER Check Out**  
 Disassembled/Decontaminated  
 Inventory Check Complete  
 All Items Complete and Accounted For  
 Returned By: \_\_\_\_\_  
 Received By: \_\_\_\_\_  
 Date: \_\_\_\_\_  
 Notes: \_\_\_\_\_  
 WWW.BATRIK.COM TAG-IT™ TI-35L3

BROKEN/ ORANGE

**ITEM #** **SIZE**  
**TI-3507** 3" x 5"  
 (8 cm x 13cm)

**BROKEN DO NOT USE**  
 DATE: \_\_\_\_\_ PHONE: \_\_\_\_\_  
 DEPARTMENT/CONTACT: \_\_\_\_\_  
 ITEM: \_\_\_\_\_  
 CRITICAL: (☠) Yes No  
 WWW.BATRIK.COM TAG-IT™ TI-3507

BLANK / BLACK

**ITEM #** **SIZE**  
**TI-3509** 3" x 5"  
 (8 cm x 13cm)

WWW.BATRIK.COM TAG-IT™ TI-3509

QUICK TURNOVER/ BLUE

**ITEM #** **SIZE**  
**TI-35T2** 3" x 5"  
 (8 cm x 13cm)

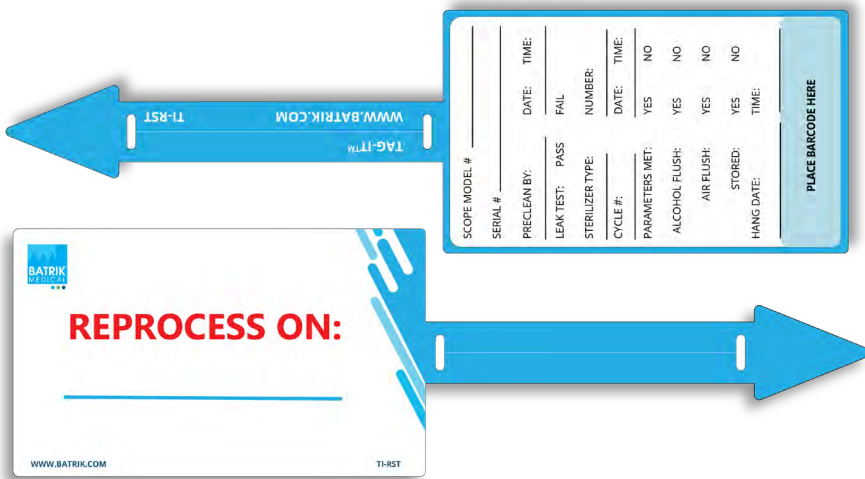
**QUICK TURNOVER**  
 Tech Initials: \_\_\_\_\_  
 Room Number: \_\_\_\_\_  
 Item Number: \_\_\_\_\_  
 Time Needed: \_\_\_\_\_  
 Decontam/LD/LD/HL/D  
 Immediate Use Sterilization  
 Terminal Sterilization in SPD  
 WWW.BATRIK.COM TAG-IT™ TI-35T2

All information tags are single-use. PACKAGING: 1 pack of 100 tags, 100 tie wraps, and 1 permanent marker.

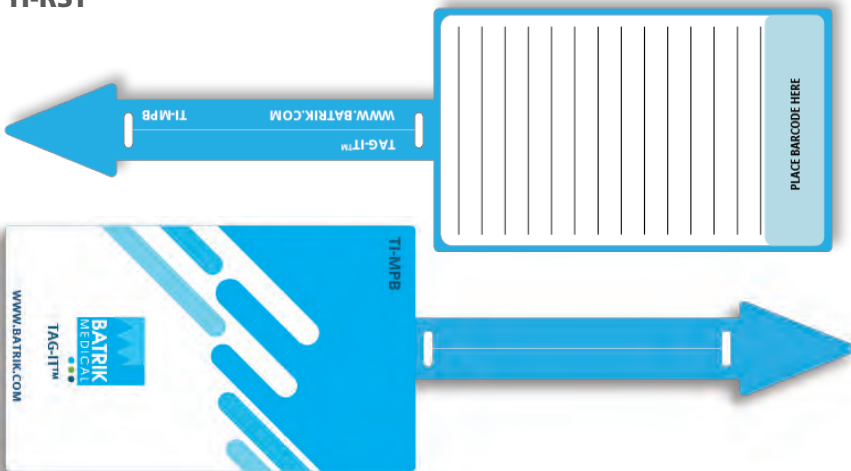
**NEW!**  
**BATRIK**

# TAG-IT™ | SCOPE REPROCESSING

Batrik Scope Reprocessing Tags are durable and can withstand handling during reprocessing **without tearing**, ensuring that information remains intact. These tags are vital in recording important information such as **date to reprocess on, scope model and serial number, sterilizer type, meeting sterilizer parameter conditions, alcohol flush, and hang date**. These tags have been meticulously designed to elevate **operational efficiency** and contribute to the delivery of the highest standard of patient care.



**TI-RST**



**TI-MPB**

\*Suitable for various information tagging purposes

### LOGGING IMPORTANT INFORMATION

- Easy for staff to indicate when the scope was processed
- Key scope, technician, and cycle-related information easily reported and identified.

### SMART DESIGN

- The self-looping design allows for easy attachment to the scope
- No requirement for extra fastening materials
- Secure fastening as the loop is tightened around the instrument
- Features an integrated barcode area



## PRODUCT SELECTION

ITEM #	DESCRIPTION	DIMENSIONS	PACKAGING
<b>TI-RST</b>	REPROCESSING SCOPE TAG	3" x 10.5" / 8 cm x 27 cm	100 / PKG
<b>TI-MPB</b>	MULTI-PURPOSE BLANK TAG	3" x 10.5" / 8 cm x 27 cm	100 / PKG

All information tags are single-use. **PACKAGING: 1 pack of 100 tags and 1 permanent marker.**

NEW!

BATRIK

# TAG-IT™ | SCOPE

Batrik Scope Tags are tear-resistant, double-sided tags that will prove indispensable throughout the reprocessing journey. Our tags make it easy to **record important information**, including processing dates, with a user-friendly feature that allows you to select the month, day, and date. Crafted from **waterproof synthetic paper**, these tags feature a **self-looping design**, making it effortless to attach them to the scope without the need for additional fastening materials. Elevate your reprocessing protocols with Batrik!

## KEY FEATURES

- The paper, tie wraps, and smudge-proof ink are designed to withstand high temperatures of up to 273.2°F (134°C) and are compatible with Gas plasma sterilization (STERRAD®100 NX Sterilization System).
- Tags include the month, day, and date selection on one side, making it convenient to mark the processing date accurately



## COLOR-CODED AND CUSTOMIZABLE

- Available in seven colors
- The tags facilitate color coding for easy identification

## SELF LOOPING

- The self-looping design allows for easy attachment to the scope
- Eliminating the need for additional fastening materials

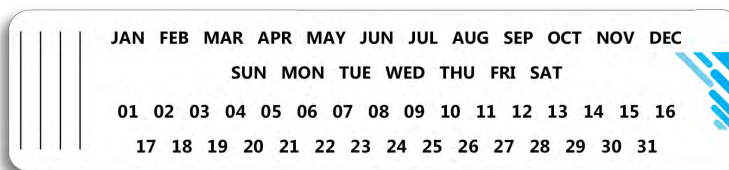
## SINGLE-USE AND LATEX FREE

- Batrik Scope Tags are designed for single use and are latex-free
- Promoting hygiene and reducing the risk of cross-contamination

## PRODUCT SELECTION

ITEM #	COLOR	SIZE	PACKAGING
TI-ST05	Yellow	11.8" x 1.55" / 33.8 cm x 4 cm	100 / PKG
TI-ST02	Blue	11.8" x 1.55" / 33.8 cm x 4 cm	100 / PKG
TI-ST03	Green	11.8" x 1.55" / 33.8 cm x 4 cm	100 / PKG
TI-ST07	Orange	11.8" x 1.55" / 33.8 cm x 4 cm	100 / PKG
TI-ST06	Purple	11.8" x 1.55" / 33.8 cm x 4 cm	100 / PKG
TI-ST04	Red	11.8" x 1.55" / 33.8 cm x 4 cm	100 / PKG
TI-ST01	White	11.8" x 1.55" / 33.8 cm x 4 cm	100 / PKG

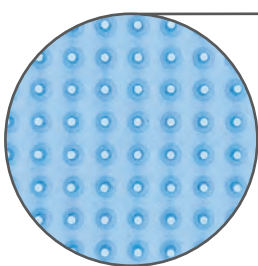
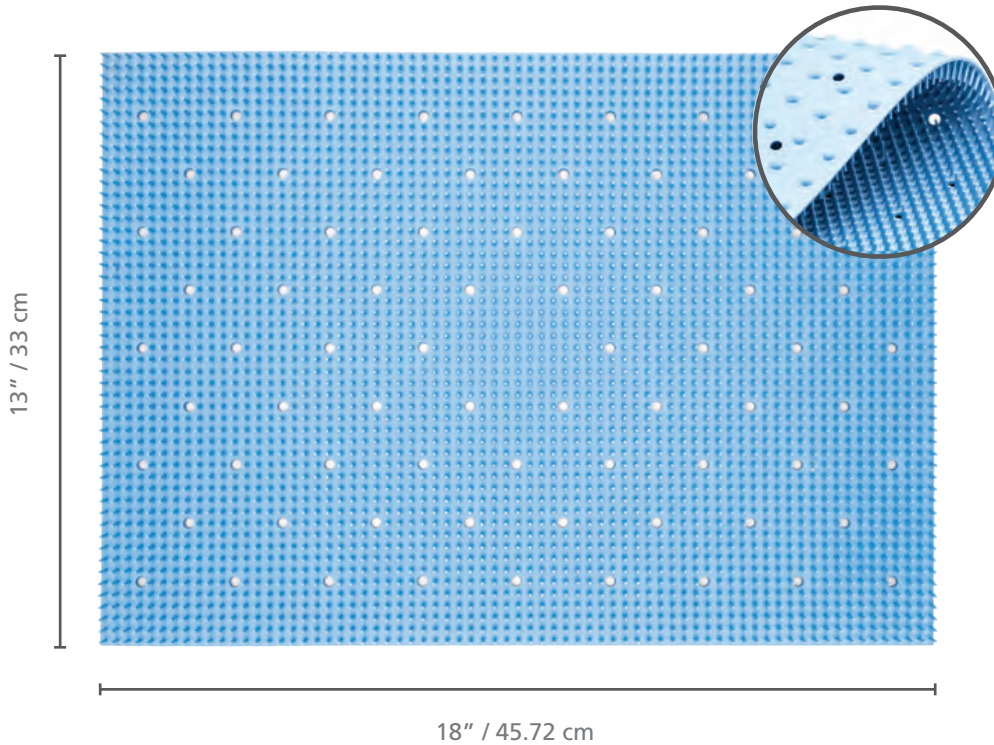
All information tags are single-use. PACKAGING: 1 pack of 100 tags and 1 permanent marker.



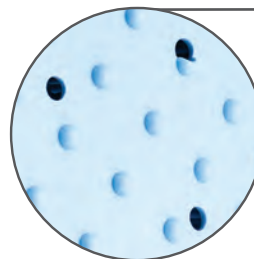
# BATRIK SILICONE PIN MAT

Our Silicone Pin Mat cushions, protects, and organizes delicate surgical instruments for sterilization. The elevated nubs provide greater air-flow ventilation and drying, significantly reducing residual moisture collection.

- Reusable
- Autoclavable
- Latex free



**FRONT SIDE**  
Pins keep instruments securely in place



**BACK SIDE**  
Numerous holes and elevated nubs provide superior venting and reduce water collection

## PRODUCT SELECTION

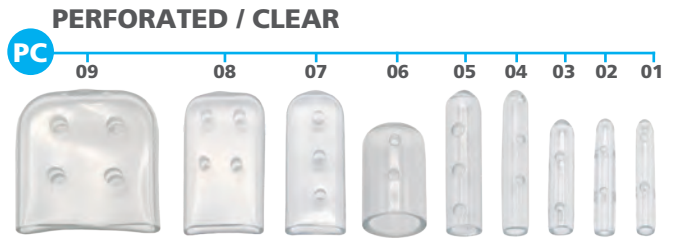
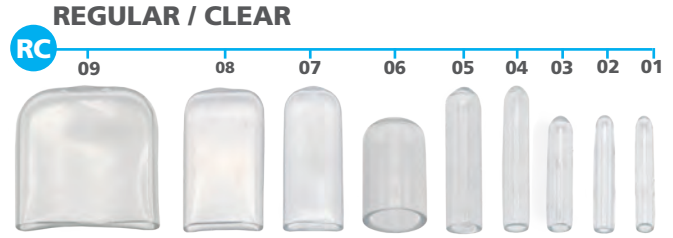
ITEM #	DIMENSIONS	PACKAGING
<b>13-2001</b>	13" x 18" (33 cm x 45.72 cm) 11.97 mm high from base of mat to end of pin 15.53 mm high from base of elevated nub to end of pin	1 unit
<b>13-2005</b>	13" x 18" (33 cm x 45.72 cm) 11.97 mm high from base of mat to end of pin 15.53 mm high from base of elevated nub to end of pin	5 units

GOOD TO KNOW:  
CUSTOM SIZES  
ARE AVAILABLE  
UPON REQUEST

# BATRIK INSTRUMENT PROTECTORS

Our Instrument Protectors protect the tips and edges of instruments to prevent damage during handling and sterilization. Available in a wide array of color coded sizes for almost every application, including osteotome, retractor, double, and perforated.

- Steam and gas permeable
- Perforated protectors reduce vacuum seal and moisture build-up
- Validated for pre-vacuum sterilization\*
- Multiple color-coded sizes
- Latex Free
- Non-Sterile



\*Independent laboratory tested to validate pre-vacuum steam sterilization efficacy in a healthcare setting



## PRODUCT SELECTION

### REGULAR & PERFORATED / CLEAR



RC-07



PC-07

ITEM # REGULAR	ITEM # PERFORATED	COLOR	DIMENSIONS
<b>RC-01</b>	<b>PC-01</b>	Clear	0.062" x 0.75" (1.57 mm x 19 mm)
<b>RC-02</b>	<b>PC-02</b>	Clear	0.075" x 0.75" (2 mm x 19 mm)
<b>RC-03</b>	<b>PC-03</b>	Clear	0.109" x 0.75" (2.77 mm x 19 mm)
<b>RC-04</b>	<b>PC-04</b>	Clear	0.125" x 1" (3.18 mm x 25.4 mm)
<b>RC-05</b>	<b>PC-05</b>	Clear	0.187" x 1" (4.75 mm x 25.4 mm)
<b>RC-06</b>	<b>PC-06</b>	Clear	0.406" x 0.75" (10.3 mm x 19 mm)
<b>RC-07</b>	<b>PC-07</b>	Clear	0.062" x 0.375" x 1" (1.57 mm x 9.53 mm x 25.4 mm)
<b>RC-08</b>	<b>PC-08</b>	Clear	0.078" x 0.625" x 1" (2 mm x 15.875 mm x 25.4 mm)
<b>RC-09</b>	<b>PC-09</b>	Clear	0.125" x 1" x 1" (3.18 mm x 25.4 mm x 25.4 mm)
<b>RC-10</b>	<b>PC-10</b>	Clear	Assorted

PACKAGING: Bag of 100

### REGULAR & PERFORATED / TINTED



RT-07



PT-07

<b>RT-01</b>	<b>PT-01</b>	Tinted White	0.062" x 0.75" (1.57 mm x 19 mm)
<b>RT-02</b>	<b>PT-02</b>	Tinted Blue	0.075" x 0.75" (2 mm x 19 mm)
<b>RT-03</b>	<b>PT-03</b>	Tinted Green	0.109" x 0.75" (2.77 mm x 19 mm)
<b>RT-04</b>	<b>PT-04</b>	Tinted Red	0.125" x 1" (3.18 mm x 25.4 mm)
<b>RT-05</b>	<b>PT-05</b>	Tinted Yellow	0.187" x 1" (4.75 mm x 25.4 mm)
<b>RT-06</b>	<b>PT-06</b>	Tinted Maroon	0.406" x 0.75" (10.3 mm x 19 mm)
<b>RT-07</b>	<b>PT-07</b>	Tinted Orange	0.062" x 0.375" x 1" (1.57 mm x 9.53 mm x 25.4 mm)
<b>RT-08</b>	<b>PT-08</b>	Tinted Brown	0.078" x 0.625" x 1" (2 mm x 15.875 mm x 25.4 mm)
<b>RT-09</b>	<b>PT-09</b>	Tinted Black	0.125" x 1" x 1" (3.18 mm x 25.4 mm x 25.4 mm)
<b>RT-10</b>	<b>PT-10</b>	Tinted Assorted	Assorted

PACKAGING: Bag of 100

### REGULAR & PERFORATED / SOLID



RS-07



PS-07

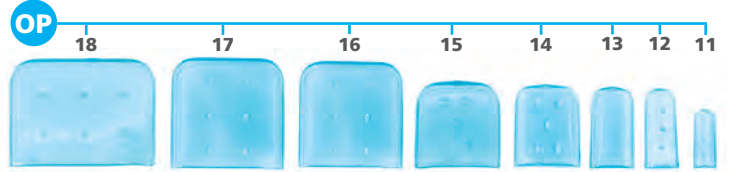
<b>RS-01</b>	<b>PS-01</b>	Solid White	0.062" x 0.75" (1.57 mm x 19 mm)
<b>RS-02</b>	<b>PS-02</b>	Solid Blue	0.075" x 0.75" (2 mm x 19 mm)
<b>RS-03</b>	<b>PS-03</b>	Solid Green	0.109" x 0.75" (2.77 mm x 19 mm)
<b>RS-04</b>	<b>PS-04</b>	Solid Red	0.125" x 1" (3.18 mm x 25.4 mm)
<b>RS-05</b>	<b>PS-05</b>	Solid Yellow	0.187" x 1" (4.75 mm x 25.4 mm)
<b>RS-06</b>	<b>PS-06</b>	Solid Maroon	0.406" x 0.75" (10.3 mm x 19 mm)
<b>RS-07</b>	<b>PS-07</b>	Solid Orange	0.062" x 0.375" x 1" (1.57 mm x 9.53 mm x 25.4 mm)
<b>RS-08</b>	<b>PS-08</b>	Solid Brown	0.078" x 0.625" x 1" (2 mm x 15.875 mm x 25.4 mm)
<b>RS-09</b>	<b>PS-09</b>	Solid Black	0.125" x 1" x 1" (3.18 mm x 25.4 mm x 25.4 mm)
<b>RS-10</b>	<b>PS-10</b>	Solid Assorted	Assorted

PACKAGING: Bag of 100

ITEM #	DIMENSIONS
<b>OP-11</b>	0.25" x 0.75" (6.35 mm x 19.05 mm)
<b>OP-12</b>	0.375" x 1" (9.53 mm x 25.4 mm)
<b>OP-13</b>	0.5" x 1" (12.7 mm x 25.4 mm)
<b>OP-14</b>	0.75" x 1" (19.05 mm x 25.4 mm)
<b>OP-15</b>	1" x 1" (25.4 mm x 25.4 mm)
<b>OP-16</b>	1.25" x 1.25" (31.75 mm x 31.75 mm)
<b>OP-17</b>	1.5" x 1.5" (38.1 mm x 38.1 mm)
<b>OP-18</b>	1.75" x 1.25" (44.45 mm x 31.75 mm)
<b>OP-20</b>	Assorted

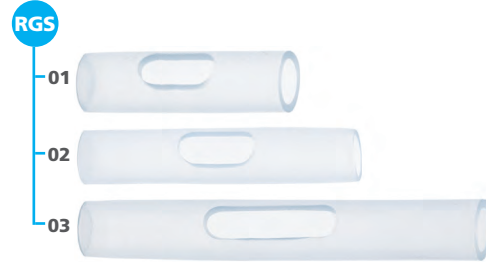
PACKAGING: Bag of 50

**OSTEOTOME PROTECTORS**



ITEM #	DIMENSIONS	PACKAGING
<b>RGS-01</b>	1.5" (38 mm)	55 / Bag
<b>RGS-02</b>	2" (51 mm)	45 / Bag
<b>RGS-03</b>	3" (76.2 mm)	40 / Bag

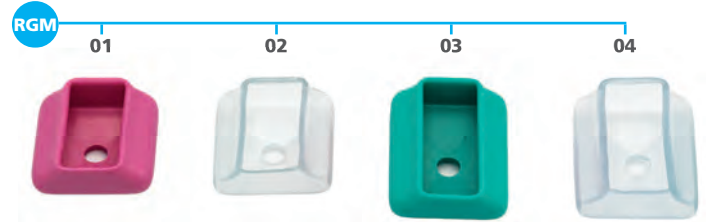
**SINGLE-TIP RETRACTOR PROTECTORS**



ITEM #	COLOR	SIZE
<b>RGM-01</b>	Pink	Small
<b>RGM-02</b>	Clear	Small
<b>RGM-03</b>	Green	Medium
<b>RGM-04</b>	Clear	Medium

PACKAGING: Bag of 50

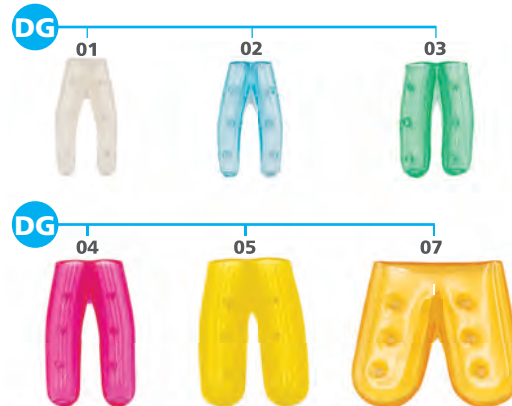
**WEITLANER RETRACTOR PROTECTORS**



ITEM #	COLOR	DIMENSIONS
<b>DG-01</b>	Clear	0.0625" x 0.75" (1.59 mm x 19.05 mm)
<b>DG-02</b>	Blue	0.078" x 0.75" (1.98 mm x 19.05 mm)
<b>DG-03</b>	Green	0.109" x 0.75" (2.78 mm x 19.05 mm)
<b>DG-04</b>	Red	0.125" x 1" (3.18 mm x 25.4 mm)
<b>DG-05</b>	Yellow	0.187" x 1" (4.76 mm x 25.4 mm)
<b>DG-07</b>	Orange	0.062" x 0.375" x 1" (1.59 mm x 9.53 mm x 25.4 mm)
<b>DG-10</b>	Assorted	Assorted

PACKAGING: Bag of 50

**PERFORATED DOUBLE PROTECTORS**



# BATRIK PrAmLi Power<sup>3</sup> LUBE™ Instrument Lubricant

Specially formulated to lubricate surgical instruments, hinges, box locks, and general equipment during autoclaving. PrAmLi Power<sup>3</sup> LUBE™ is uniquely formulated with an all natural corrosion inhibitor.

- Forms a protective coating which can extend the instrument's, useful life
- Bacteriostatic
- Neutral pH 6.5 - 7.5
- Prevents corrosion

**TIP:**  
FOR MILK BATH SOLUTION,  
DILUTE 1 PART SOLUTION  
IN 6 PARTS WATER

Formulated with  
**PrAmLi Power<sup>3</sup> Enzymes™**

ITEM #	DIMENSIONS
OP-11	0.25" x 0.75" (6.35 mm x 19.05 mm)
OP-12	0.375" x 1" (9.53 mm x 25.4 mm)
OP-13	0.5" x 1" (12.7 mm x 25.4 mm)
OP-14	0.75" x 1" (19.05 mm x 25.4 mm)
OP-15	1" x 1" (25.4 mm x 25.4 mm)
OP-16	1.25" x 1.25" (31.75 mm x 31.75 mm)
OP-17	1.5" x 1.5" (38.1 mm x 38.1 mm)
OP-18	1.75" x 1.25" (44.45 mm x 31.75 mm)
OP-20	Assorted

PACKAGING: Bag of 50

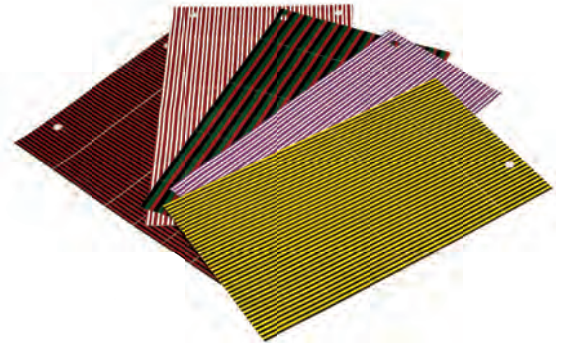


## PRODUCT SELECTION

ITEM #	DILUTION LUBRICANT / WATER	PACKAGING	CASE DIMENSIONS
SS-21-6001	1 to 4 ml / L (0.125 to 0.5 oz / Gallon)	1 x 3.8 L (1 Gallon)	6" x 6" x 13"
SS-21-6004	1 to 4 ml / L (0.125 to 0.5 oz / Gallon)	4 x 3.8 L (4 Gallons)	13" x 13" x 14"
SS-21-6025	1 to 4 ml / L (0.125 to 0.5 oz / Gallon)	2 x 9.5 L (2 x 2.5 Gallons)	14.5" x 9.25" x 15"
SS-21-6032	No dilution required	1 x 946 ml (32 oz) Spray bottle	10" x 4"
SS-21-6012	No dilution required	12 X 946 ml (32 oz) Spray Bottles	18" x 12" x 11"

# BATRIK S.T.I.C.S.

Our Simple Tracking Identification Color System, or S.T.I.C.S., is an easy to use, latex free, tool that allows you to quickly identify your instruments by department and/or procedure. The tape adheres securely and every tape sheet comes with a protective cover to ensure it lasts as long as you need.



Each 8.5" x 11" (216 mm x 279 mm) sheet contains the following adhesive strips:

- 1" (25.4 mm) x 220
- 1.5" (38.1 mm) x 44
- 2" (50.8 mm) x 44
- Total tape per sheet 374" (9500 mm)

## PRODUCT SELECTION

SOLID COLORS	
ITEM #	COLOR
T-850-2-01	White
T-850-2-02	Royal Blue
T-850-2-03	Kelly Green
T-850-2-04	Red
T-850-2-05	Yellow
T-850-2-06	Purple
T-850-2-07	Orange
T-850-2-08	Brown
T-850-2-09	Black
T-850-2-10	Gray
T-850-2-11	Lavender
T-850-2-12	Beige
T-850-2-13	Light Blue
T-850-2-14	Lime Green
T-850-2-15	Pink
T-850-2-17	Plum
T-850-2-18	Mint Green

BLACK STRIPES	
ITEM #	COLOR
T-850-3-01	Black/White
T-850-3-03	Black/Kelly Green
T-850-3-04	Black/Red
T-850-3-05	Black/Yellow
T-850-3-07	Black/Orange
T-850-3-10	Black/Gray
T-850-3-11	Black/Lavender
T-850-3-12	Black/Beige
T-850-3-13	Black/Light Blue
T-850-3-14	Black/Lime Green
T-850-3-15	Black/Pink
T-850-3-17	Black/Plum

TRI-COLOR	
ITEM #	COLOR
T-850-5-51	Red/White/Blue
T-850-5-54	Red/Black/Green

SPECIALTY	
ITEM #	COLOR
T-850-7-04	Yellow/Red

WHITE STRIPES	
ITEM #	COLOR
T-850-4-02	White/Royal Blue
T-850-4-03	White/Kelly Green
T-850-4-04	White/Red
T-850-4-05	White/Yellow
T-850-4-07	White/Orange
T-850-4-08	White/Brown
T-850-4-11	White/Lavender
T-850-4-13	White/Light Blue
T-850-4-14	White/Lime Green
T-850-4-15	White/Pink
T-850-4-17	White/Plum

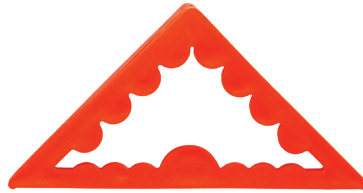
FOUR-COLOR	
ITEM #	COLOR
T-850-2-31	Red/Yellow/ Purple/Orange
T-850-2-32	Blue/White/ Black/Green

# BATRIK CORNER POCKETS™

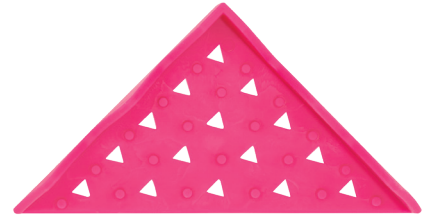
With three models to choose from, our Corner Pockets™ portfolio is a truly comprehensive line of products designed to prevent tearing associated with sharp corners or feet on surgical trays.



18-CP02



18-CP07

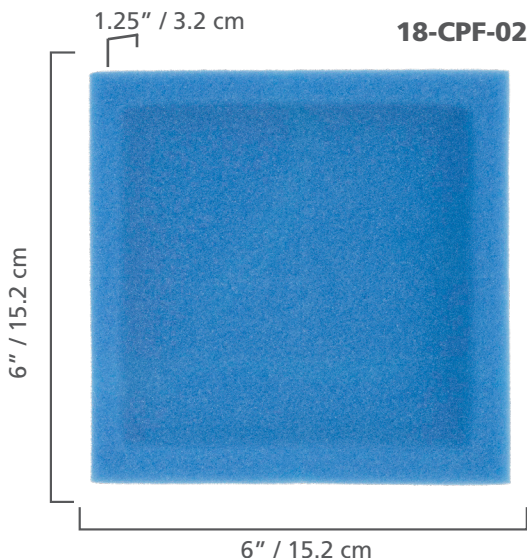


18-CP06

COLOUR	BLUE	ORANGE	PINK
USAGE	SINGLE-USE	REUSABLE <i>withstands repeated sterilization up to 134°C</i>	REUSABLE <i>withstands repeated sterilization up to 134°C</i>
DIMENSIONS	2.8" x 4" (7.3 cm x 10.3 cm)	2.8" x 4" (7.3 cm x 10.3 cm)	3.4" x 4.7" (8.5 cm x 12 cm)
LATEX-FREE	✓	✓	✓
NO MOISTURE RETENTION	✓	✓	✓
FABRICATION	Flexible, silicone-like plastic	Flexible, silicone-like plastic	Our most flexible plastic for easiest placement and most secure protection

# SOFT POCKETS™

Our Soft Pockets™ Foam Corner Protectors are made from high density foam to effectively cushion and protect the corners of surgical trays to prevent tearing. They are especially useful with heavier instrument sets.



## PRODUCT SELECTION

ITEM #	DESCRIPTION	PACKAGING	CASE DIMENSIONS
18-CP02**	Corner Pockets™ Single-Use, Blue	240 / Bag	80 / Box (24 Boxes / Pallet)
18-EVAL2**	Corner Pockets™ Single-Use, Blue	24 / Bag	-
18-CP07	Corner Pockets™ Reusable, Orange	80 / Bag	-
18-CORNER	Corner Pockets™ Reusable, Orange	320 / Box (4 Bags of 80 pcs)	-
18-EVAL7	Corner Pockets™ Reusable, Orange	24 / Bag	-
18-CP06	Corner Pockets™ Reusable, Pink	80 / Bag	-
18-CPF-02	Soft Pockets™ Single-Use Foam Corner Protectors	80 / Box (24 Boxes / Pallet)	-

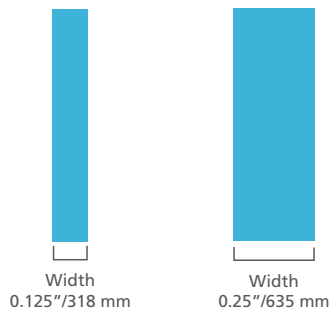
\*\* Although the single use Corner Pockets™ appear similar to the reusable models they are blended differently and have only been validated as single-use. Re-using them may compromise sterility.

# BATRIK ID TAPE



A simple solution for marking surgical instruments with the aid of color-coding, our ID Tape is durable and will not chip, flake, or peel. It can be used in autoclaves, withstanding repeated exposure to sterilization. Independent validation tests demonstrated the efficiency of sterilization of marked instruments, even underneath the Batrik ID Tape.

## AVAILABLE WIDTHS



Quickly identifies instruments by department or procedure



Easy to apply



Withstands repeated exposure to sterilization



Has more per tape roll (300" / 7620 mm)



Available in 7 colors and 2 widths



Conveniently packaged in a clear box



Non-Sterile

## PRODUCT SELECTION

ITEM #	ITEM#	COLOR
0.125" / 318 MM	0.25" / 635 MM	
T-125-01	T-250-01	White
T-125-02	T-250-02	Blue
T-125-03	T-250-03	Green
T-125-04	T-250-04	Red
T-125-05	T-250-05	Yellow
T-125-07	T-250-07	Orange
T-125-09	T-250-09	Black

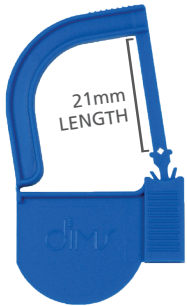
# BATRIK PADLOCKS SECURITY TAGS

Our Padlock Security Tags for instrument containers and general hospital applications are specifically designed for the healthcare market. Our material selection, fabrication process, and engineering ensure consistent quality and high temperature compliance with the various steam sterilization temperatures in worldwide hospital applications.

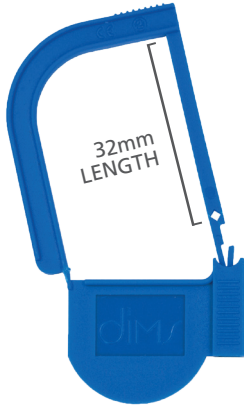
Available with optional reactive ink indicator dots that provide visual sterility indication. Light blue dots turn brown/dark brown when steam sterilized.

## AVAILABLE IN THREE FORMATS

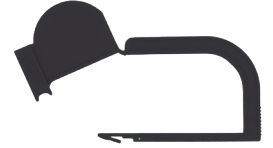
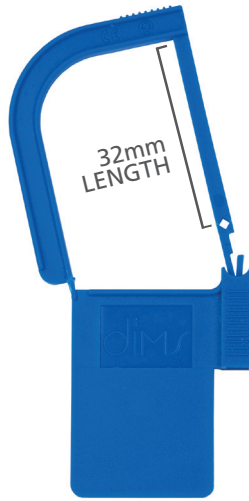
### 700-SERIES



### 800-SERIES



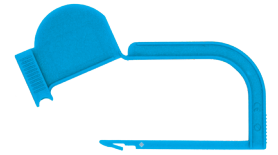
### 900-SERIES



Made of polypropylene



Latex and DEHP Free



Will not melt or soften with any established steam sterilization protocol



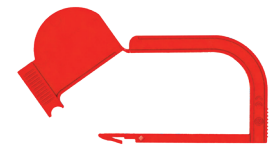
Fully open design (45°) facilitates insertion into instrument containers



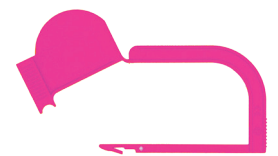
Easy twist breaking design



Large base for easier handling



Available in different size



Custom Colors and OEM available upon request

## PRINTED & CUSTOM NUMBERED PADLOCKS

Available in 700, 800 & 900 SERIES

### PRODUCT SELECTION

COLOR	PRINTED WORD
<b>PRINTED PADLOCKS</b>	
WHITE	CLEAN
BLUE	STERILE
RED	REPAIR
YELLOW	SHARPEN
YELLOW	LOANER
BLACK	DISCARD
<b>CUSTOM NUMBERED</b>	
ALL COLORS	up to 8 numbers



**CUSTOM NUMBERED**  
Custom printed padlocks (up to 8 characters)



**PRINTED**  
6 different printed labels available

NOTE: Printed & Custom Numbered Padlocks are available in 700, 800, and 900 Series and can be ordered in 100, 200, and 500 unit quantities. Please contact us for ordering details.

INDICATOR DOTS



REGULAR



# 700-SERIES PADLOCKS

The 700 series padlocks are perfect for "Aesculap" containers and those with a short, large opening.

## PRODUCT SELECTION

### REGULAR PADLOCKS

COLOR	100 UNITS	200 UNITS	500 UNITS
WHITE	15-701	15-711	15-710
BLUE	15-702	15-712	15-720
GREEN	15-703	15-713	15-730
RED	15-704	15-714	15-740
YELLOW	15-705	15-715	15-750
PINK	15-706	15-716	15-760
ORANGE	15-707	15-717	15-770
BLACK	15-709	15-719	15-790
LIGHT BLUE	15-722	15-732	15-742

### WITH INDICATORS DOTS

COLOR	100 UNITS	200 UNITS	500 UNITS
WHITE	15-701-IND	15-711-IND	15-710-IND
BLUE	15-702-IND	15-712-IND	15-720-IND
GREEN	15-703-IND	15-713-IND	15-730-IND
RED	15-704-IND	15-714-IND	15-740-IND
YELLOW	15-705-IND	15-715-IND	15-750-IND
PINK	15-706-IND	15-716-IND	15-760-IND
ORANGE	15-707-IND	15-717-IND	15-770-IND
BLACK	15-709-IND	15-719-IND	15-790-IND
LIGHT BLUE	15-722-IND	15-732-IND	15-742-IND

Double locking hooks can be inserted in a large guide hole



The grooves on the padlock facilitate handling





**INDICATOR DOTS**



**REGULAR**



# 800-SERIES PADLOCKS

The 800 series padlocks have a longer arm (32 mm) and have a single, thinner hook than the 700 series. They are perfect for almost any type of container, even those with long and thin channels.

## PRODUCT SELECTION

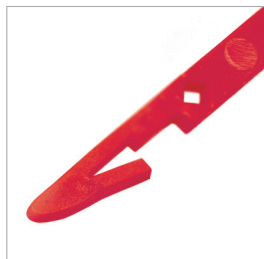
### REGULAR PADLOCKS

COLOR	100 UNITS	200 UNITS	500 UNITS
WHITE	15-801	15-811	15-810
BLUE	15-802	15-812	15-820
GREEN	15-803	15-813	15-830
RED	15-804	15-814	15-840
YELLOW	15-805	15-815	15-850
PINK	15-806	15-816	15-860
ORANGE	15-807	15-817	15-870
BLACK	15-809	15-819	15-890
LIGHT BLUE	15-822	15-832	15-842

### WITH INDICATORS DOTS

COLOR	100 UNITS	200 UNITS	500 UNITS
WHITE	15-801-IND	15-811-IND	15-810-IND
BLUE	15-802-IND	15-812-IND	15-820-IND
GREEN	15-803-IND	15-813-IND	15-830-IND
RED	15-804-IND	15-814-IND	15-840-IND
YELLOW	15-805-IND	15-815-IND	15-850-IND
PINK	15-806-IND	15-816-IND	15-860-IND
ORANGE	15-807-IND	15-817-IND	15-870-IND
BLACK	15-809-IND	15-819-IND	15-890-IND
LIGHT BLUE	15-822-IND	15-832-IND	15-842-IND

Single locking hook can be inserted in a large guide hole

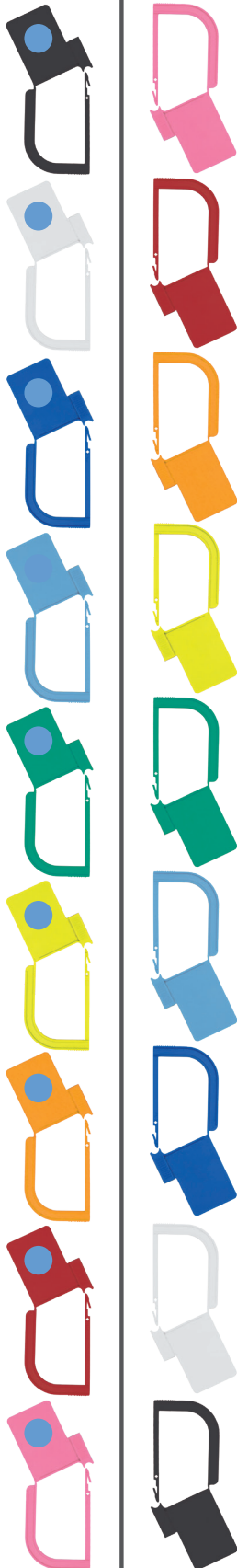


The locking system allows for **easy closure**



**INDICATOR DOTS**

**REGULAR**



# 900-SERIES PADLOCKS

The 900 series padlocks are identical to the 800 series, but with a larger rectangular base which allows for the placement of a 20 mm x 30 mm tracking label.

## PRODUCT SELECTION

### REGULAR PADLOCKS

COLOR	100 UNITS	200 UNITS	500 UNITS
WHITE	15-901	15-911	15-910
BLUE	15-902	15-912	15-920
GREEN	15-903	15-913	15-930
RED	15-904	15-914	15-940
YELLOW	15-905	15-915	15-950
PINK	15-906	15-916	15-960
ORANGE	15-907	15-917	15-970
BLACK	15-909	15-919	15-990
LIGHT BLUE	15-922	15-932	15-942

### WITH INDICATORS DOTS

COLOR	100 UNITS	200 UNITS	500 UNITS
WHITE	15-901-IND	15-911-IND	15-910-IND
BLUE	15-902-IND	15-912-IND	15-920-IND
GREEN	15-903-IND	15-913-IND	15-930-IND
RED	15-904-IND	15-914-IND	15-940-IND
YELLOW	15-905-IND	15-915-IND	15-950-IND
PINK	15-906-IND	15-916-IND	15-960-IND
ORANGE	15-907-IND	15-917-IND	15-970-IND
BLACK	15-909-IND	15-919-IND	15-990-IND
LIGHT BLUE	15-922-IND	15-932-IND	15-942-IND

**Single locking hook**  
for use with smaller diameters



Ideal for adding labels/ indicators indicators or markings to the large rectangular base



# BATRIK TAPE-B-GONE™ TAPE REMOVER

Tape-B-Gone™ is a uniquely formulated and ready-to-use proprietary formula that easily removes adhesives from medical equipment and instruments. Unlike many other brands, Tape-B-Gone™ does not contain highly dangerous or caustic chemicals, is not flammable or combustible, and is safe for use on metal, glass, plastic, and rubber without any special equipment or ventilation.



## PRODUCT SELECTION

ITEM #	DESCRIPTION	PACKAGING
<b>T-08RMV</b>	8 oz (237 ml) bottle	1 Unit
<b>T-32RMV</b>	8 oz (237 ml) bottle	4 / Pack
<b>T-SAMP-RMV</b>	0.5 oz (15 ml) bottle	1 Unit

# SAVEFACE™ DRAPED SHIELDS

**REDUCE PERSONAL INJURY**  
**SUPERIOR INSTRUMENT DECONTAMINATION PROTECTION**

## SAVEFACE DRAPED-FACE SHIELD

In the Sterile Processing Department (SPD)/Central Sterile Supply Department (CSSD), personal safety is paramount.

Our Draped Face Shield provides essential protection during high-risk instrument decontamination.

## EFFECTIVE PROTECTION IS NON-NEGOTIABLE

SAVEFACE Draped dynamically reduces harmful exposure to caustic chemicals as well as the risk of cross-contamination. Effective face protection is non-negotiable.

## PPE CATEGORY 2 CERTIFIED

SAVEFACE DRAPED is tested to protect. Wear it with confidence.



PATENT PENDING



INCLUDES CLOSING SYSTEM TO REDUCE RISK OF FLUID CONTACT FROM BELOW THE SHIELD

## SAVEFACE: KEY FEATURES

### ANSI/AAMI PB70 LEVEL 3 COMPLIANT DRAPE:

- Provides a high level of fluid penetration protection.
- Tuck into clothing or pinch together.

### EXTRA-LONG 9"/23CM WRAP-AROUND SHIELD:

- Ensures full coverage, reducing the risk of exposure from different angles.

### COMFORTABLE:

- The soft, self-shaping foam headpiece molds comfortably to your forehead, allowing for extended wear without discomfort.

### OPTICAL CLARITY WITH ANTI-FOG AND ANTI-GLARE

# DON'T MISS THE OPPORTUNITY TO EXPLORE OUR BROADER RANGE OF PROTECTIVE SHIELDS.

Visit our website [www.surgmed.com](http://www.surgmed.com) or consult our detailed literature to find the shield that best fits your needs.

## VERY IMPORTANT

### IS YOUR PRESENT FACE SHIELD CATEGORY 2 CERTIFIED?

Batrik face shields are independently certified to comply with the PPE Category 2 standard. Many facilities are now requesting compliance to this standard.



SF-8240

SF-240

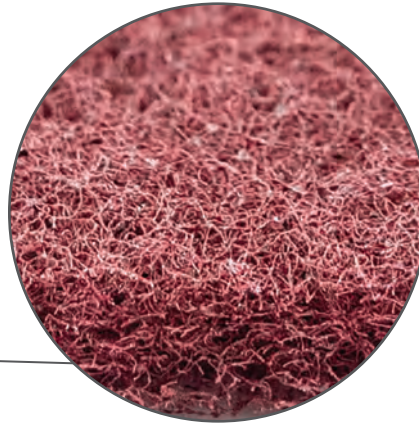


## PRODUCT SELECTION

ITEM #	DESCRIPTION	DIMENSIONS	TOTAL LENGTH	PACKAGING	CASE DIMENSIONS
SF-240	BATRIK SAVEFACE™ no drape	Shield Length: 9" / 23cm Shield width: 13' / 33cm	9" (23cm)	240 / Case (8 Boxes of 30 Pcs)	26.5" x 21" x 15"
SF-8240	BATRIK SAVEFACE™ with ANSI/AAMI PB70 Level 3 compliant protection drape	Shield Length: 9" / 23cm Shield width: 13' / 33cm Shield width: 6" / 15cm	58 cm / 23"	240 / Case (8 Boxes of 30 Pcs)	26.5" x 21" x 15"

# BATRIK SCRUB PAD

Our Scrub Pad is ideal for pre-cleaning your surgical instruments without leaving any metal residue that often occurs when using steel wool or metal sponges. The abrasiveness is perfectly balanced to provide you with efficient cleaning without damaging your instruments. Its fine fibers allow the user to polish, clean, and debur all types of material surfaces.



- Abrasive Material: Aluminum Oxide
- Grit: 400
- Grade: Very Fine
- Style: Flexible
- Pad material: Non-Woven
- Color: Maroon
- Type: Hand Pad



## PRODUCT SELECTION

ITEM #	DESCRIPTION	DIMENSIONS	PACKAGING
<b>60-46050</b>	Scrub Pad	4" x 6" / 10 cm x 15 cm	150 / Box (50 bags of 3 units each)
<b>60-46003</b>	Scrub Pad	4" x 6" / 10 cm x 15 cm	3 / Bag

BATRIK

# LILA'S INSTRUMENT STAIN REMOVER

Lila's special blend of naturally sourced powders provides outstanding removal of stubborn stains.

Convenient-to-use formula, you can achieve spotless results every time!

It can be used on surgical/dental instruments, autoclaves, ultrasonic cleaners, stainless steel countertops, trays, bowls and more.

Specifically designed for use on stainless steel, chrome, nickel, brass, copper, and silver.



LSR-8501

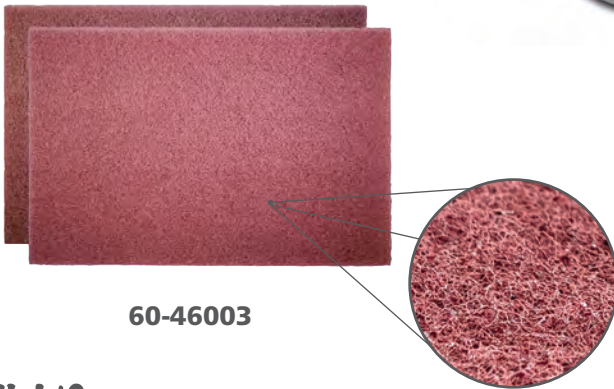
## EASE TO USE AS 1,2,3...

1. Dampen a cloth or grab a Lila's Low Linting Dura-Towel and dab into the jar.
2. Gently rub the area that is stained.
3. Rinse thoroughly for a flawless shine.<sup>2</sup>

## A little Goes a long Way!

Even great to tackle stubborn stains on steel pots and pans in your kitchen with ease.

Lila's - If you have used Spectra-Scrub or Integra's instrument stain remover then you will love Lila's!



60-46003



17-DT1213C

## LILA'S SCRUB PAD

- Say goodbye to extra stubborn stains with Lila's Scrub Pad without leaving any metal residue.
- Simply add a small amount of Lila's Stain Remover with one of our Scrub Pad's for very large areas.
- The gentle yet effective scrub is the perfect choice for Ophthalmic Instruments.<sup>1</sup>

## LILA'S LOW-LINTING DURA-TOWEL

- Lila's Dura-Towel has long lasting strength and has a minimal lint composition.
- These single-use towels are clean room certified and are specifically designed for instrument wiping.
- Its ideal dimensions and unique attributes guarantee optimal performance, setting it apart from ordinary paper towels.

## PRODUCT SELECTION

ITEM #	DESCRIPTION	DIMENSIONS	PACKAGING
<b>LSR-8501</b>	LILA'S INSTRUMENT STAIN REMOVER 3 oz (85g) plastic jar with a convenient screw-on lid	Ø 2.8" / 70 mm	1 Jar / Bag
<b>LSR-8512</b>	LILA'S INSTRUMENT STAIN REMOVER 3 oz (85g) plastic jar with a convenient screw-on lid	Ø 2.8" / 70 mm	12 Jars / Box
<b>17-DT1213C</b>	LILA'S LOW LINTING DURA-TOWEL 1080 towels	12" x 13" / 31 cm x 33 cm Folded: 3" x 3.25" / 7.5 cm x 8.25 cm	90 / Bag 12 Bags / Box
<b>60-46003</b>	LILA'S SCRUB PAD	4" x 6" / 10 cm x 15 cm	3 / Bag
<b>LSR-BUNDLE</b>	LILA'S STAIN REMOVER + LILA'S DURA-TOWEL 3 oz (85g) plastic jar + 90 towels	Ø 2.8" / 70 mm 12" x 13" / 31 cm x 33 cm	1 Jar / Bag 90 / Bag

1 : Although Lila's is completely safe, it is not recommended for use on ophthalmic instruments. Use Lila's Scrub Pad on its own.  
2: The stain remover should not be mixed with bleach and is for external use only to remove instrument stains.

Your First ™

# ENZYMATIC & NON-ENZYMATIC CLEANERS

Our Enzymatic and Non-Enzymatic Cleaners are specially formulated to remove organic material from medical equipment and instrumentation.

Our **Enzymatic Cleaner** formats are formulated with PrAmLi Power3 Enzymes™, our proprietary unique blend of enzymes, and a surfactant to efficiently remove all proteins, blood, fatty tissue, and more. They also remove stains from surgical scrubs, linens, and medical clothing.

Our **Non-Enzymatic Cleaner** formats are formulated with a free-rinsing, neutral pH detergent blend for effective cleaning.



Both formats are powerful solutions that break down all bioburden for effective surface and instrument pre-cleaning\*

## PRODUCT SELECTION

ENZYMATIC CLEANER	NON-ENZYMATIC CLEANER	DILUTION DETERGENT / WATER	PACKAGING	CASE DIMENSIONS
<b>LOW FOAM</b>				
SS-21-1001	SS-721-1001	4 to 8 ml / L (0.5 to 1 oz / Gal)	1 x 3.8 L (1 Gal)	6" x 6" x 13"
SS-21-1004	SS-721-1004	4 to 8 ml / L (0.5 to 1 oz / Gal)	4 x 3.8 L (4 Gal)	13" x 13" x 14"
<b>MILD FOAM</b>				
SS-21-2001	SS-721-2001	4 to 8 ml / L (0.5 to 1 oz / Gal)	1 x 3.8 L (1 Gal)	6" x 6" x 13"
SS-21-2004	SS-721-2004	4 to 8 ml / L (0.5 to 1 oz / Gal)	4 x 3.8 L (4 Gal)	13" x 13" x 14"
<b>SUPER CONCENTRATE</b>				
SS-21-3001	SS-721-3001	1 to 2 ml / L (0.125 to 0.25 oz / Gal)	1 x 3.8 L (1 Gal)	6" x 6" x 13"
SS-21-3004	SS-721-3004	1 to 2 ml / L (0.125 to 0.25 oz / Gal)	4 x 3.8 L (4 Gal)	13" x 13" x 14"

### GOOD TO KNOW:

OUR LOW FOAM & SUPER CONCENTRATE DETERGENTS (ENZYMATIC & NON-ENZYMATIC) MAY BE USED IN WASHERS / ULTRASONIC CLEANERS.

WE RECOMMEND CONFIRMING SUGGESTED DILUTION RATIO AND WATER TEMPERATURE WITH THE MANUFACTURER OF YOUR WASHER / ULTRASONIC CLEANER AS MACHINES / SETTINGS VARY.

NOTE: Our Low Foam & Super Concentrate Detergent formulas are available in a 2.5 Gallon format based on a minimum order quantity. Contact us for more information.

\*Caution: We recommend consulting your hospital pre-cleaning/cleaning protocols for various equipment/instrument cleaning detergent preferences.



Your First ™

# ENVIRO-SACHET™

## ENZYMATIC GEL & NON-ENZYMATIC CLEANER

Your First ™ Enviro-Sachet™, our unique cleaning solutions now available in Enzymatic & Non-Enzymatic formats.



- Our Enzymatic Gel format is formulated with the same triple action **PrAmLi Power<sup>3</sup> Enzymes™** that you know and trust.
- Our Non-Enzymatic Cleaner format is formulated with a free-rinsing, neutral pH detergent blend.

Both formats are powerful solutions that break down all bioburden for effective surface and instrument pre-cleaning.

### PRODUCT SELECTION

ENZYMATIC GEL	NON-ENZYMATIC CLEANER	DESCRIPTION	PACKAGING	CASE DIMENSIONS
<b>17-166</b>	<b>717-166</b>	1 Dry Tubular Sponge & Enviro-Sachet™ set	25 / Box 4 Boxes / Case	21" x 14" x 13.5"
<b>17-266</b>	<b>717-266</b>	1 Dry Flat Sponge & Enviro-Sachet™ set	50 / Box 4 Boxes / Case	21" x 14" x 13.5"
<b>17-177</b>	<b>717-177</b>	1 Dry Tubular Sponge, Enviro-Sachet™ & Stainless Steel Bowl kit	1 Kit	7" x 6" x 3"
<b>17-277</b>	<b>717-277</b>	1 Dry Flat Sponge, Enviro-Sachet™ & Stainless Steel Bowl kit	1 Kit	7" x 6" x 3"
<b>17-EZSAMP</b>	<b>717-EZSAMP</b>	SAMPLE KIT INCLUDES: 3 Dry Flat Sponges with Enviro-Sachet™ sets 1 Dry Tubular Sponge with Enviro-Sachet™ set 1 Reusable Stainless Steel Bowl	1 Kit	7" x 6" x 3"
<b>H-EZ500</b>		Reusable Stainless Steel Bowl 4.3" x 5.3" x 3" / 11 cm x 13.5 cm x 7.5 cm	1 Unit	7" x 6" x 3"

Your First ™

# FOAMING SPRAY

## READY-TO-USE ENZYME FOAMING SPRAY

Our Foaming Spray is ideal for instrument pre-cleaning as the thick foam spray enzymatically breaks down all bioburden to allow for effective cleaning and sterilization.

Formulated with **PrAmLi Power<sup>3</sup> Enzymes™**, a unique blend of three powerful enzymes along with a surfactant to provide the ultimate in cleaning efficacy



### INSTRUCTIONS



### PRODUCT SELECTION

ITEM #	PACKAGING	CASE DIMENSIONS
SS-21-4001	1 x 946 ml (32 oz) Spray Bottle	10" x 4"
SS-21-4012	12 x 946 ml (32 oz) Spray Bottles	18" x 12" x 11"

Important: In addition to our enzymatic formulation, our spray bottle contains as much as 25% more solution when compared to the competition.

Your First ™

# FIRST WIPES

Our cleanroom wipes are designed to do the first wipe-down of an endoscope after a procedure. They are made from hydroentangled non-woven material composed of 45% polyester and 55% cellulose. These wipes are manufactured and packaged in a cleanroom environment.



- Can be used for a cleanroom environment of ISO Class 5 through 8
- Production process guarantees extremely low particle generation and chemical extractables
- Compatible with virtually any solvent or solution for cleaning and wiping (such as **PrAmLi Power<sup>3</sup> Enzymes™**)
- Double-bag packaging
- Available in two versatile sizes

## PRODUCT SELECTION

ITEM #	DESCRIPTION	DIMENSIONS	PACKAGING	CASE DIMENSIONS
<b>17-A0909</b>	Non-woven Cleanroom Wipes	9" x 9" (23 cm x 23 cm)	300 / Bag 14 Bags / Case	18.5" x 10" x 25.25"
<b>17-A1212</b>	Non-woven Cleanroom Wipes	12" x 12" (31 cm x 31 cm)	150 / Bag 10 Bags / Case	13" x 13" x 19"

Your First ™

# DRY SPONGES

Our sponges are specifically fabricated for use with all medical instrumentation. Unlike most competitor sponges, our sponges are white to better evidence the effectiveness of the cleaning process. Dark colored sponges easily hide contaminants, but with our white sponges you can visually evaluate the pre-clean efficacy.



Available in two formats, Flat and Tubular:

Will not flake or scratch expensive equipment

Eco-friendly

100% medical grade high-density foam

Compatible with enzymatic and disinfectant solutions

TIP: OUR TUBULAR SPONGE CAN ALSO BE USED AS A BUMPER TO PROTECT YOUR SCOPES

High absorbency retains more solution than conventional sponges or paper wipes

OUR WHITE SPONGES MAY APPEAR SLIGHTLY YELLOWED. THIS IS ONLY DUE TO UV EXPOSURE, IS NOT A REFLECTION OF ITS AGE.

## PRODUCT SELECTION

ITEM #	DESCRIPTION	DIMENSIONS	PACKAGING
17-100	DRY TUBULAR SPONGE <a href="#">White Dispenser Box</a>	2.0" ø x 4.25" (2.7 cm ø x 10.8 cm)	25 / Box (4 Boxes / Case)
17-101	DRY TUBULAR SPONGE <a href="#">Bulk</a>	2.0" ø x 4.25" (2.7 cm ø x 10.8 cm)	560 / Case
17-200	DRY FLAT SPONGE <a href="#">White Dispenser Box</a>	4" x 5" x 0.5" (10.2 cm x 12.7 cm x 1.3 cm)	50 / Box (4 Boxes / Case)
17-201	DRY FLAT SPONGE <a href="#">Bulk</a>	4" x 5" x 0.5" (10.2 cm x 12.7 cm x 1.3 cm)	1,000 / Case

Your First ™

ENZYMATIC BEDSIDE SPONGE KITS

RightSwipe™

Introducing RightSwipe™, our newly launched Enzymatic Bedside Sponge Kits now feature sponges treated with an enhanced formula for a more effective pre-clean or surface clean solution. Our improved three-enzyme blend ensures thorough and safe cleaning and a simplified application process making RightSwipe™ the perfect match for your endoscope care needs. The tubular sponge design is compatible with diverse endoscope models, providing versatility alongside the superior benefits of our enzymatic solution.



FLAT SPONGE



TUBULAR SPONGE



FREESTANDING POUCH



ENVIRO-SACHET™ ENZYMATIC GEL KIT

DISPENSER BOX

PRODUCT SELECTION

ITEM #	DESCRIPTION	PACKAGING	CASE DIMENSIONS
17-111	PRE-TREATED TUBULAR SPONGE Add 100-500 ml of water to activate detergent solution. Comes in plastic bag. <sup>1</sup>	25 / Box (4 Boxes / Case)	21" x 14" x 13.5"
17-211	PRE-TREATED FLAT SPONGE Add 100-500 ml of water to activate detergent solution. Comes in plastic bag. <sup>1</sup>	50 / Box (4 Boxes / Case)	21" x 14" x 13.5"
17-122	PRE-TREATED TUBULAR SPONGE Comes in a freestanding pouch to use as a basin. Simply add 500 ml of water to the pouch.	15 / Box (4 Boxes / Case)	21" x 14" x 13.5"
17-222	PRE-TREATED FLAT SPONGE Comes in a freestanding pouch to use as a basin. Simply add 500 ml of water to the pouch.	25 / Box (4 Boxes / Case)	21" x 14" x 13.5"
17-133	READY TO USE TUBULAR SPONGE Comes pre-treated in 500 ml of an enzymatic solution in freestanding pouch.	24 / Case	14" x 12" x 9"
17-233	READY TO USE FLAT SPONGE Comes pre-treated in 500 ml of an enzymatic solution in freestanding pouch.	24 / Case	14" x 12" x 9"
17-144	READY TO USE DUAL PURPOSE TUBULAR SPONGE Comes pre-treated in 100 ml of an enzymatic solution in freestanding pouch.	12 / Box (4 Boxes / Case)	21" x 14" x 13.5"
17-244	READY TO USE DUAL PURPOSE FLAT SPONGE Comes pre-treated in 100 ml of an enzymatic solution in freestanding pouch.	12 / Box (4 Boxes / Case)	21" x 14" x 13.5"
17-155	READY TO USE TUBULAR SPONGE Comes pre-treated in 220 ml of an enzymatic solution in freestanding pouch.	24 / Case	14" x 12" x 9"
17-255	READY TO USE FLAT SPONGE Comes pre-treated in 220 ml of an enzymatic solution in freestanding pouch.	24 / Case	14" x 12" x 9"
17-277	ENZYMATIC GEL Comes with 1 Dry Flat Sponge, Tubular Sponge, Enviro-Sachet™ & Stainless Steel Bowl kit	1 Kit	1 Kit

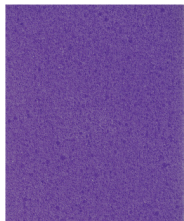
Our stainless steel bowl can be sold separately and used as a basin for easy and convenient sponge activation.<sup>1</sup>

Your First ™

## NON-ENZYMATIC DETERGENT BEDSIDE SPONGE KITS

# RightSwipe™

Presenting our enhanced Non-Enzymatic Bedside Sponge Kits. Each kit includes sponges pre-treated with a free-rinsing, neutral pH detergent blend from RightSwipe™, ensuring an effective pre-cleaning and surface cleaning solution for medical instruments. This kit stands as Your First ™ step in the medical instrument cleaning process, showcasing the advanced benefits for superior instrument care. Our enhanced bedside kits will provide you with a streamlined workflow.



FLAT SPONGE



TUBULAR SPONGE



FREESTANDING POUCH



ENVIRO-SACHET™  
NON-ENZYMATIC CLEANER

DISPENSER BOX

## PRODUCT SELECTION

ITEM #	DESCRIPTION	PACKAGING	CASE DIMENSIONS
717-122	PRE-TREATED TUBULAR SPONGE Add 100-500 ml of water to activate non-enzymatic detergent. Comes in plastic bag.1	15 / Box (4 Boxes / Case)	21" x 14" x 13.5"
717-222	PRE-TREATED FLAT SPONGE Add 100-500 ml of water to activate non-enzymatic detergent. Comes in plastic bag.1	25 / Box (4 Boxes / Case)	21" x 14" x 13.5"
717-133	READY TO USE TUBULAR SPONGE Comes pre-treated in 500 ml of non-enzymatic solution in freestanding pouch.	24 / Case	14" x 12" x 9"
717-233	READY TO USE FLAT SPONGE Comes pre-treated in 500 ml of non-enzymatic solution in freestanding pouch.	24 / Case	14" x 12" x 9"
717-144	READY TO USE DUAL PURPOSE TUBULAR SPONGE Comes pre-treated in 100 ml of non-enzymatic solution in freestanding pouch.	12 / Box (4 Boxes / Case)	21" x 14" x 13.5"
717-244	READY TO USE DUAL PURPOSE FLAT SPONGE Comes pre-treated in 100 ml of non-enzymatic solution in freestanding pouch.	12 / Box (4 Boxes / Case)	21" x 14" x 13.5"
717-155	READY TO USE TUBULAR SPONGE Comes pre-treated in 220 ml of non-enzymatic solution in freestanding pouch.	24 / Case	14" x 12" x 9"
717-255	READY TO USE FLAT SPONGE Comes pre-treated in 220 ml of non-enzymatic solution in freestanding pouch.	24 / Case	14" x 12" x 9"
717-277	NON-ENZYMATIC CLEANER Comes with 1 Dry Flat Sponge, Enviro-Sachet™ & Stainless Steel Bowl kit.	1 Kit	1 Kit

Our stainless steel bowl can be sold separately and used as a basin for easy and convenient sponge activation.1

Your First ™

# TRANSPORT BAGS FOR ENDOSCOPE AND MEDICAL INSTRUMENTS

Thoughtfully designed to eliminate touch-points during endoscope transport from point-of-care to the reprocessing area, and back, focused on safety of patients and medical staff.

- Made of recyclable LDPE material known to be quite flexible, highly resilient, and tough
- Latex and DEHP-free
- Excellent resistance to dilute and concentrated acids, alcohols, bases and esters\*
- Good resistance to aldehydes, ketones, and vegetable-based oils\*
- Can withstand high temperatures of up to 90 °C (194°F)
- Tamper-evident seal for added safety, also aids in keeping the instrument moist to avoid drying of bio-debris
- Clearly marked bags with color-coded visuals facilitates immediate identification of clean vs. used instruments
- Users can write important information directly on the bag in spaces marked with visual icons
- Available in two convenient sizes

GOOD TO KNOW: USING **Your First ™** SEALABLE TRANSPORT BAGS REDUCES USER ERROR, PREVENTS CROSS-CONTAMINATION, AND PROMOTES PATIENT AND MEDICAL STAFF SAFETY.

## PRODUCT SELECTION

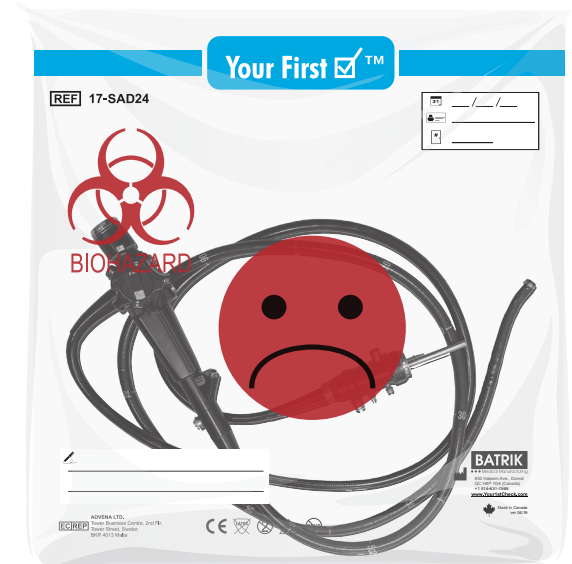
ITEM #	DESCRIPTION	DIMENSIONS	PACKAGING	CASE DIMENSIONS
<b>17-HAP24</b>	Clean Instruments Bag	24" x 22" / 61.0 cm x 56.0 cm	200 / Case	18" x 14" x 5"
<b>17-SAD24</b>	Soiled Instruments Bag	24" x 22" / 61.0 cm x 56.0 cm	200 / Case	18" x 14" x 5"
<b>17-HAP30</b>	Clean Instruments Bag	30.5" x 26" / 77.0 cm x 66.0 cm	200 / Case	21" x 19" x 7"
<b>17-SAD30</b>	Soiled Instruments Bag	30.5" x 26" / 77.0 cm x 66.0 cm	200 / Case	21" x 19" x 7"

\*Reference on file

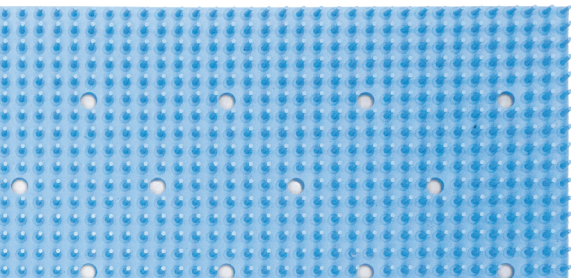
### CLEAN INSTRUMENTS BAG



### SOILED INSTRUMENTS BAG



MADE IN CANADA



SURGMED GROUP

2165 46th Ave., Lachine, Quebec H8T 2P1  
Phone: +1 514-631-7988 | Toll Free: 800-661-5432 | Fax.: +1 514-631-9083  
Email: [info@surgmed.com](mailto:info@surgmed.com) | Website: [www.batrik.com](http://www.batrik.com)