



IMPERIAL WARE

STAINLESS STEEL HOSPITAL WARE



BOWL STANDS & RECEPTACLES

Our Bowl Stands and Receptacles are designed for convenience, mobility, and durability. Available in five versatile models that accommodate most standard sizes of stainless steel bowls and pails. Fully welded stainless steel construction throughout with a #4 polished finish.

All bowl stands are backed by an outstanding **7 year warranty** on all parts (see warranty for details).

KEY FEATURES

- Seamless welded tubular frame with lower cross-bracing provides maximum rigidity and extended product life
- Optional lower stainless steel shelf is available for all configurations
- Non-marking conductive swivel design 2" (51 mm) casters

PRODUCT SELECTION

ITEM #	DESCRIPTION
OR-36310	SPONGE RECEPTACLES: FLOOR UNITS Mobile Kick Bucket with Qt. Pail and Perimeter Bumper Receptacle: 14.5" Ø x 8" H / 368 mm Ø x 203 mm H Receptacle and bucket: 14.5" Ø x 15" H / 368 mm Ø x 381 mm H Bucket: 12" Ø x 11" H / 305 mm Ø x 279 mm H
OR-3632	MOBILE SPONGE RECEPTACLES with 10 Qt. Oval Basin and Perimeter Bumper
OR-3631-TB	SPONGE RECEPTACLES: TABLE HEIGHT Mobile Table Height Receptacle with 20 Qt. Pail 15" L x 16" W x 38" H (381 mm x 406 mm x 965 mm)
OR-3651	SPONGE RECEPTACLES: TABLE HEIGHT Single Bowl Stand with 7 Qt. Basin 15" L x 16" W x 34" H (381 mm x 406 mm x 864 mm)
OR-3652	SPONGE RECEPTACLES: TABLE HEIGHT Double Bowl Stand with Two 7 Qt. Basins 33" L x 16" W x 34" H (838 mm x 406 mm x 864 mm)



THE LOWER SHELF IS AN OPTIONAL FEATURE THAT MUST BE ADDED TO THE ITEM IF DESIRED

ACCESSORIES

ITEM #	DESCRIPTION
OR-3631-PS	12 QT. STAINLESS STEEL PAIL for OR-36310
OR-3631-TB-PS	20 QT. STAINLESS STEEL PAIL for OR-3631-TB
OR-3632-BS	10 QT. OVAL STAINLESS STEEL BASIN for OR 3632
OR-3651-BS	7 QT. STAINLESS STEEL BASIN for OR-3651 and OR-3652

Add suffix -LS to any Item # to add a lower shelf

GRADUATED MEASURING

PRODUCT SELECTION

ITEM #	DESCRIPTION (Ø x H)
H-0201	300 CC (10 OZ) 83 mm x 114 mm
H-0202	500CC (16 OZ) 96 mm x 124 mm
H-0203	1000 CC (32 OZ) 128 mm x 134 mm
H-0204	2000 CC (64 OZ) 151 mm x 172 mm



H-0201

H-0203

GALLIPOTS

PRODUCT SELECTION

ITEM #	DESCRIPTION (Ø x H)
H-0361	GALLIPOT, 2 OZ 65 mm x 35 mm
H-0362	GALLIPOT, 4 OZ 77 mm x 45 mm
H-0363	GALLIPOT, 6 OZ 83 mm x 50 mm
H-0364	GALLIPOT, 10 OZ 95 mm x 55 mm
H-0365	GALLIPOT, 14 OZ 112 mm x 58 mm
H-0366	GALLIPOT, 8 OZ 90 mm x 50 mm
H-0367	GALLIPOT, 12 OZ 103 mm x 60 mm



H-0361

H-0363

All Imperial Ware products are backed by our 1 year warranty.

WASH BASINS & BOWLS



H-0321

PRODUCT SELECTION

ITEM #	DESCRIPTION (Ø x H)
H-1228	WASH BASIN, SHALLOW TYPE, 12.5" 320 mm x 80 mm
H-1229	WASH BASIN, DEEP TYPE, 12.5" 320 mm x 105 mm
H-1230	WASH BASIN, DEEP TYPE, 13.375" 340 mm x 100 mm
H-1231	WASH BASIN, DEEP TYPE, 14.4" 365 mm x 115 mm
H-0301	BOWL, 10 CM, 3/8 QT, 14 OZ 108 mm x 50 mm
H-0302	BOWL, 12 CM, 5/8 QT, 20 OZ 133 mm x 56 mm
H-0303	BOWL, 14 CM, 1 QT, 32 OZ 145 mm x 60 mm
H-0304	BOWL, 16 CM, 1 3/8 QT, 44 OZ 167 mm x 70 mm
H-0305	BOWL, 18 CM, 1 7/8 QT, 60 OZ 185 mm x 70 mm
H-0321	SOLUTION BOWL, 4 QT, 128 OZ 330 mm x 84 mm
H-0322	SOLUTION BOWL, 5 1/8 QT, 164 OZ 308 mm x 110 mm
H-0323	SOLUTION BOWL, 7 QT, 224 OZ Ø 355 mm x 115 mm



H-0302

FOOD SERVICE CONTAINERS



H-0802

PRODUCT SELECTION

ITEM #	DESCRIPTION (L x W x H)
H-0801	FOOD SERVICE CONTAINER, FULL SIZE 530 mm x 320 mm x 65 mm
H-0801P	PERFORATED FOOD SERVICE CONTAINER, FULL SIZE 530 mm x 320 mm x 65 mm
H-0802	FOOD SERVICE CONTAINER, FULL SIZE 530 mm x 320 mm x 100mm
H-0802P	PERFORATED FOOD SERVICE CONTAINER, FULL SIZE 530 mm x 320 mm x 100mm
H-0803	COVER FOR FOOD SERVICE CONTAINER, FULL SIZE 533 mm x 325 mm x 35 mm
H-0807	FOOD SERVICE CONTAINER, 1/2 SIZE 321 mm x 262 mm x 65 mm
H-0807P	PERFORATED FOOD SERVICE CONTAINER, 1/2 SIZE 321 mm x 262 mm x 65 mm
H-0808	FOOD SERVICE CONTAINER, 1/2 SIZE 321 mm x 262 mm x 100 mm
H-0808P	PERFORATED FOOD SERVICE CONTAINER, 1/2 SIZE 321 mm x 262 mm x 100 mm
H-0809	COVER FOR FOOD SERVICE CONTAINER, 1/2 SIZE 324 mm x 265 mm x 32 mm



H-0801P



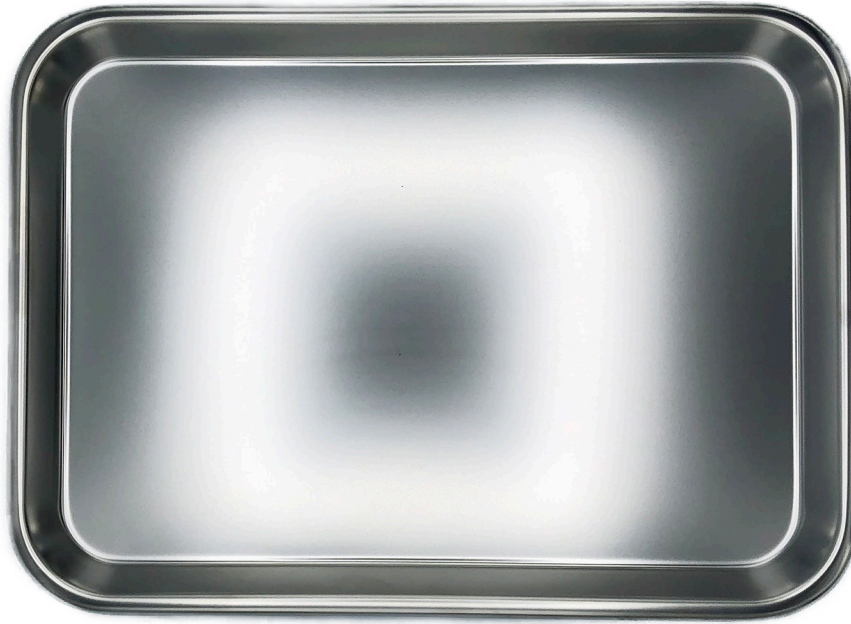
H-0808P

All Imperial Ware products are backed by our 1 year warranty.



INSTRUMENT TRAYS

SHALLOW



H-0557



H-0553



H-0558

PRODUCT SELECTION

ITEM #	DESCRIPTION (L x W x H)
H-0553	INSTRUMENT TRAY 210 mm x 110 mm x 8 mm
H-0554	SHALLOW RECTANGULAR TRAY 217 mm x 128 mm x 12 mm
H-0556	SHALLOW RECTANGULAR TRAY 225 mm x 162 mm x 14 mm
H-0557	SHALLOW RECTANGULAR TRAY 285 mm x 185 mm x 17 mm
H-0558	SHALLOW RECTANGULAR TRAY 338 mm x 245 mm x 17 mm
H-0559	SHALLOW RECTANGULAR TRAY 390 mm x 271 mm x 18 mm
H-0559P	PERFORATED SHALLOW TRAY 390 mm x 271 mm x 18 mm
H-0560	SHALLOW RECTANGULAR TRAY 440 mm x 295 mm x 18 mm
H-0560P	PERFORATED SHALLOW TRAY 440 mm x 295 mm x 18 mm
H-0561	SHALLOW RECTANGULAR TRAY 491 mm x 322 mm x 18 mm

All Imperial Ware products are backed by our **1 year warranty**.

INSTRUMENT TRAYS

DEEP & PERFORATED



H-0563

PRODUCT SELECTION

ITEM #	DESCRIPTION (L x W x H)
H-0562	DEEP RECTANGULAR TRAY 292 mm x 195 mm x 50 mm
H-0563	DEEP RECTANGULAR TRAY 335 mm x 246 mm x 55 mm
H-0563P	PERFORATED RECTANGULAR TRAY 335 mm x 246 mm x 55 mm
H-0564	DEEP RECTANGULAR TRAY 387 mm x 272 mm x 60 mm
H-0564P	PERFORATED DEEP RECTANGULAR TRAY 387 mm x 272 mm x 60 mm
H-0565	DEEP RECTANGULAR TRAY 445 mm x 281 mm x 97 mm
H-0565P	PERFORATED DEEP RECTANGULAR TRAY 445 mm x 281 mm x 97 mm
H-0566	DEEP RECTANGULAR TRAY 501 mm x 336 mm x 101 mm



H-0565



H-0562

All Imperial Ware products are backed by our 1 year warranty.



IMPERIAL WARE, STANDS & RECEPTACLES

CATHETER & INSTRUMENT TRAYS



H-0153



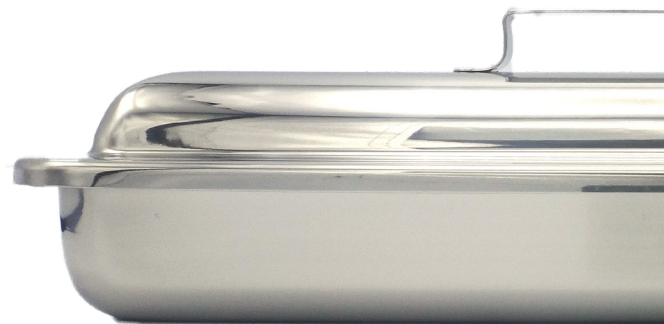
H-0156



H-0159

PRODUCT SELECTION

ITEM #	DESCRIPTION
H-0151	CATHETER & INSTRUMENT TRAY (NO COVER)
H-0152	COVER FOR H-0151
H-0153	CATHETER & INSTRUMENT TRAY SET (WITH COVER, RAISED HANDLE) 219 mm L x 81 mm W x 35 mm H
H-0154	CATHETER & INSTRUMENT TRAY (NO COVER)
H-0155	COVER FOR H-0154
H-0156	CATHETER & INSTRUMENT TRAY SET (WITH COVER, RAISED HANDLE) 231 mm L x 132 mm W x 49 mm H
H-0157	CATHETER & INSTRUMENT TRAY (NO COVER)
H-0158	COVER FOR H-0157
H-0159	CATHETER & INSTRUMENT TRAY SET (WITH COVER, RAISED HANDLE) 320 mm L x 95 mm W x 50 mm H



CATHETER & INSTRUMENT TRAYS

PRODUCT SELECTION

ITEM #	DESCRIPTION
H-0160	CATHETER & INSTRUMENT TRAY (NO COVER)
H-0160P	PERFORATED CATHETER & INSTRUMENT TRAY (NO COVER)
H-0161	COVER FOR H-0160 AND H-0160P
H-0162	CATHETER & INSTRUMENT TRAY SET (WITH COVER, FLUSH HANDLE) 310 mm L x 196 mm W x 50 mm H
H-0163	CATHETER & INSTRUMENT TRAY (NO COVER)
H-0163P	PERFORATED CATHETER & INSTRUMENT TRAY (NO COVER)
H-0164	COVER FOR H-0163 AND H-0163P
H-0165	CATHETER & INSTRUMENT TRAY SET (WITH COVER, FLUSH HANDLE) 310 mm L x 196 mm W x 65 mm H
H-0166	CATHETER & INSTRUMENT TRAY (NO COVER)
H-0167	COVER FOR H-0166
H-0168	CATHETER & INSTRUMENT TRAY SET (WITH COVER, RAISED HANDLE) 441 mm L x 116 mm W x 45 mm H



H-0162



H-0165



H-0168



URINALS & BEDPANS



H-0102



H-0108



H-0109

PRODUCT SELECTION

ITEM #	DESCRIPTION
H-0101	ADULT BEDPAN WITHOUT COVER 355 mm x 290 mm x 50 mm
H-0102	ADULT BEDPAN WITH COVER 355 mm x 165 mm
H-0105	FRACTURE BEDPAN (LONG COVER) 310 mm x 245 mm
H-0106	FRACTURE BEDPAN (SHORT COVER) 355 mm x 290 mm x 50
H-0107	MALE URINAL (VERTICAL TYPE) 110 mm x 230 mm
H-0108	MALE URINAL (HORIZONTAL TYPE) 110 mm x 230 mm
H-0109	FEMALE URINAL 124 mm x 125 mm x 216 mm
H-0111	ADULT BEDPAN WITH 2 HANDLES, RIGHT & LEFT 110 mm x 230 mm
H-0112	ADULT BEDPAN WITH 2 HANDLES, FRONT & BACK 110 mm x 230 mm

All Imperial Ware products are backed by our 1 year warranty.

JARS & COVERS

PRODUCT SELECTION

ITEM #	DESCRIPTION (Ø x H)
H-0391	NEEDLE OR OINTMENT JAR WITH COVER (RAISED HANDLE) 76 mm x 63 mm
H-0392	NEEDLE OR OINTMENT JAR WITH COVER (RAISED HANDLE) 95 mm x 65 mm
H-0393	DRESSING JAR WITH COVER (FLUSH HANDLE) 90 mm x 110 mm
H-0394	DRESSING JAR WITH COVER (FLUSH HANDLE) 102 mm x 80 mm
H-0395	DRESSING JAR WITH COVER (FLUSH HANDLE) 102 mm x 130 mm
H-0396	DRESSING JAR WITH COVER (FLUSH HANDLE) 123 mm x 130 mm
H-0397	DRESSING JAR WITH COVER (FLUSH HANDLE) 123 mm x 166 mm
H-0398	DRESSING JAR WITH COVER (FLUSH HANDLE) 180 mm x 180 mm
H-0399	DRESSING JAR WITH COVER 62 mm x 82 mm
H-0400	DRESSING JAR WITH COVER (FLUSH HANDLE) 82 mm x 100 mm
H-1214	FORCEP JAR WITH HANDLE, 60 MM 65 mm x 100 mm
H-1215	FORCEP JAR WITH HANDLE, 75 MM 82 mm x 123 mm
H-1216	FORCEP JAR WITH HANDLE, 90 MM 98 mm x 145 mm
H-1217	FORCEP JAR WITH HANDLE, 100 MM 105 mm x 170 mm
H-1218	FORCEP JAR, 50 MM 55 mm x 80 mm



H-0398



H-1215

All Imperial Ware products are backed by our 1 year warranty.



IMPERIAL WARE, STANDS & RECEPTACLES

PETRI DISHES

H-1223

H-1224

H-1226

H-1227



IMPERIAL WARE, STANDS & RECEPTACLES



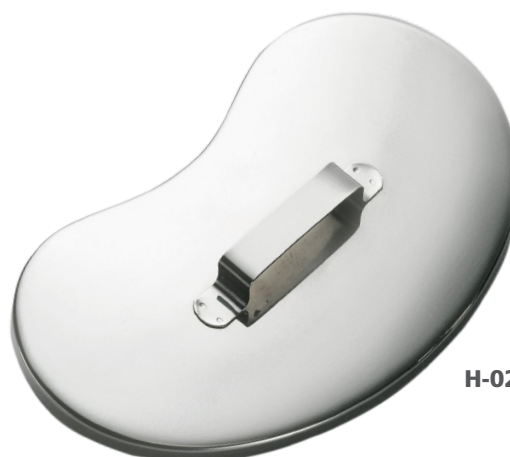
H-1225

PRODUCT SELECTION

ITEM #	DESCRIPTION (Ø x H)
H-1223	PETRI DISH WITH COVER 60 mm x 20 mm
H-1224	PETRI DISH WITH COVER 75 mm x 20 mm
H-1225	PETRI DISH WITH COVER 90 mm x 17 mm
H-1226	PETRI DISH WITH COVER 90 mm x 20 mm
H-1227	PETRI DISH WITH COVER 120 mm x 20 mm

All Imperial Ware products are backed by our 1 year warranty.

EMESIS BASINS



H-0262

PRODUCT SELECTION

ITEM #	DESCRIPTION (Ø x W x H)
H-0261	EMESIS BASIN, 6" WITHOUT COVER 172 mm x 96 mm x 34 mm
H-0262	COVER FOR H-0261 175 mm x 100 mm x 7 mm
H-0264	EMESIS BASIN, 8" WITHOUT COVER 208 mm x 98 mm x 36 mm
H-0265	COVER FOR H-0264 210 mm x 100 mm x 7 mm
H-0267	EMESIS BASIN, 10" WITHOUT COVER 256 mm x 119 mm x 45 mm
H-0268	COVER FOR H-0267 260 mm x 125 mm x 7 mm
H-0270	EMESIS BASIN, 12" WITHOUT COVER 310 mm x 152 mm x 55 mm
H-0271	COVER FOR H-0270 315 mm x 155 mm x 10 mm



H-0261



All Imperial Ware products are backed by our 1 year warranty.

CUPS, TUMBLERS, AND PITCHERS



H-0342-4



H-0352



H-0381



H-0502

PRODUCT SELECTION

ITEM #	DESCRIPTION (Ø x H)
H-0341	MEDICINE CUP, 1 OZ 48 mm x 30 mm
H-0342	MEDICINE CUP, 2 OZ 52 mm x 50 mm
H-0351	IODINE CUP, 2 OZ 60 mm x 30 mm
H-0352	IODINE CUP, 6 OZ 83 mm x 55 mm
H-0353	IODINE CUP, 14 OZ 120 mm x 60 mm
H-0381	TUMBLER, 5 OZ 65 mm x 75 mm
H-0382	TUMBLER, 7 OZ 77 mm x 80 mm
H-1233	TUMBLER, 10 OZ 80 mm x 98 mm
H-0383	TUMBLER, 12 OZ 83 mm x 115 mm
H-0502	SOLUTION PITCHER, 1 QT 100 mm x 150 mm
H-0503	SOLUTION PITCHER, 2 QT 130 mm x 165 mm
H-0505	BELL-SHAPED PITCHER, 0.9 LT 150 mm x 170 mm
H-0506	BELL-SHAPED PITCHER, 1.8 LT 160 mm x 205 mm
H-0507	BELL-SHAPED PITCHER, 2.7 LT 195 mm x 226 mm

ANCILLARY ITEMS



H-0241



H-0233

PRODUCT SELECTION

ITEM #	DESCRIPTION (Ø x H)
H-0211	THERMOMETER / FORCEP JAR 27 mm x 102 mm
H-0212	THERMOMETER / FORCEP JAR 55 mm x 120 mm
H-0213	THERMOMETER / FORCEP JAR 55 mm x 190 mm
H-0232	TONGUE DEPRESSOR 22 mm x 170 mm
H-0233	TONGUE DEPRESSOR 23 mm x 190 mm
H-0241	TABLET COUNTING DISH L 215 mm x W 150 mm x H 135 mm



H-0212



H-0213



IMPERIAL WARE, STANDS & RECEPTACLES

All Imperial Ware products are backed by our 1 year warranty.



SURGMED GROUP

2165 46th Ave., Lachine, Quebec H8T 2P1
Phone: +1.514.631.7988 | Toll Free: 800.661.5432 | Fax: +1.514.631.9083
Email: info@surgmed.com | Website: www.imperialsurgical.com